

Growth Technology

CLONEX[®]

Rooting Gel



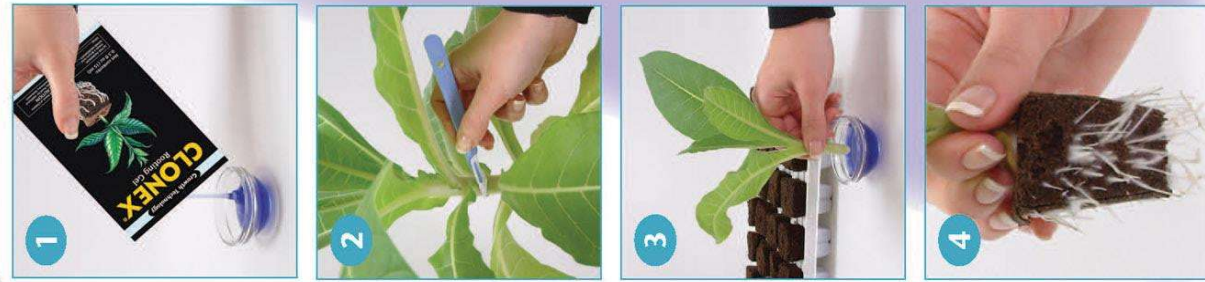
Net contents:
0.5 fl oz (15 ml)

ACTIVE INGREDIENT:
Indole-3-Butyric Acid..... 0.31%
OTHER INGREDIENTS:..... 99.69%
TOTAL:..... 100.00%

Keep Out of Reach of Children
CAUTION
See Inside Panel for Additional
Precautionary Statements

CLONEX[®]

Rooting Gel



PEEL BACK

DIRECTIONS FOR USE

It is a violation of Federal law to use this product in a manner inconsistent with its labeling.

CLONEX Rooting Gel is used to ensure root production on cuttings of plants by supplying essential hormones needed for accelerated root development.

CLONEX Rooting Gel may be used on all types of cuttings, including woody, herbaceous, and flowering ornamental species, vegetables, fruit trees and small fruits.

Dip cutting in Clonex Rooting Gel to desired depth. Insert cutting into rooting medium. Mist cuttings and place in propagator or a warm, clean, moist and humid environment. Look for root development in 1 to 2 weeks.

Keep Out of Reach of Children

CAUTION

See Inside Panel for Additional
Precautionary Statements

EPA Reg. No. 79664-1
EPA Est. No. 79463-MI-001

Manufactured for:
Growth Technology Ltd.
Great Western Way, Taunton,
Somerset TA2 6BX, UK



www.growthtechnology.com

